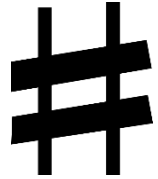
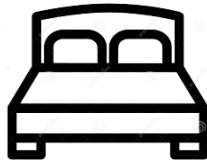


## **Sky Island – Lot 254 - \$699,000**

*The term **Sky Island**, "mountain island in a desert sea", was popularized by nature writer Weldon Heald, a resident of southeastern Arizona. The term salutes the beauty of the southwest.*



2541 sq. ft.

3 Bedrooms

3.5 Bathrooms

2 Car & RV

Lot 254

Move-in ready home! This Sky Island plan is loaded with beautiful upgrades throughout the home. The striking entry offers big views of the great room just beyond. The 16' wide patio glass sliders let the outside in and the inside out. The beautiful 360-degree views greet you from every room. The cordial kitchen/great room makes a statement with its premium finishes, upgraded cabinets, and stainless-steel appliances. The great room provides an abundance of natural light to magnify your indoor/outdoor experience. A luxurious and warm primary bathroom boasts quartz countertops, dual sinks, and a private toilet area.

- The oversized kitchen island provides a centerpiece for entertaining
- A luxurious primary bathroom boasts quartz countertops, dual sinks, and a private toilet area
- Upgraded Kitchen with Bottom Freezer Refrigerator, Microwave/Convection 5 Electric Burner Range, Dishwasher and Avallon Beverage Center
- Multi-panel glass stacking doors for indoor/outdoor luxury living space
- \$6,400 wiring upgrade





The entire home is heated and air conditioned with Mitsubishi Mini Split individual room control. Zoned Mitsubishi solutions treat every room in the Sky Island independently so that every room may just stand by or accommodate individual needs. An ERV system assures adequate fresh air introduction to this well insulated and airtight home. Yes, even the 3car/2car RV garage is Foam Insulated and AC zone controlled. Work on your favorite project in the garage on the beautiful epoxy floor and the big full-size side door inviting the outside to join your project.

This home enjoys a HERS rating of 41 and needs only a small solar array to become [NetZero](#). Insulated with BASF foams in all exterior walls and interior acoustic sound wall separating the Great Room from the guest bedrooms. Deako light switches throughout.....the smart choice for smart home control



**ENERGY STAR**

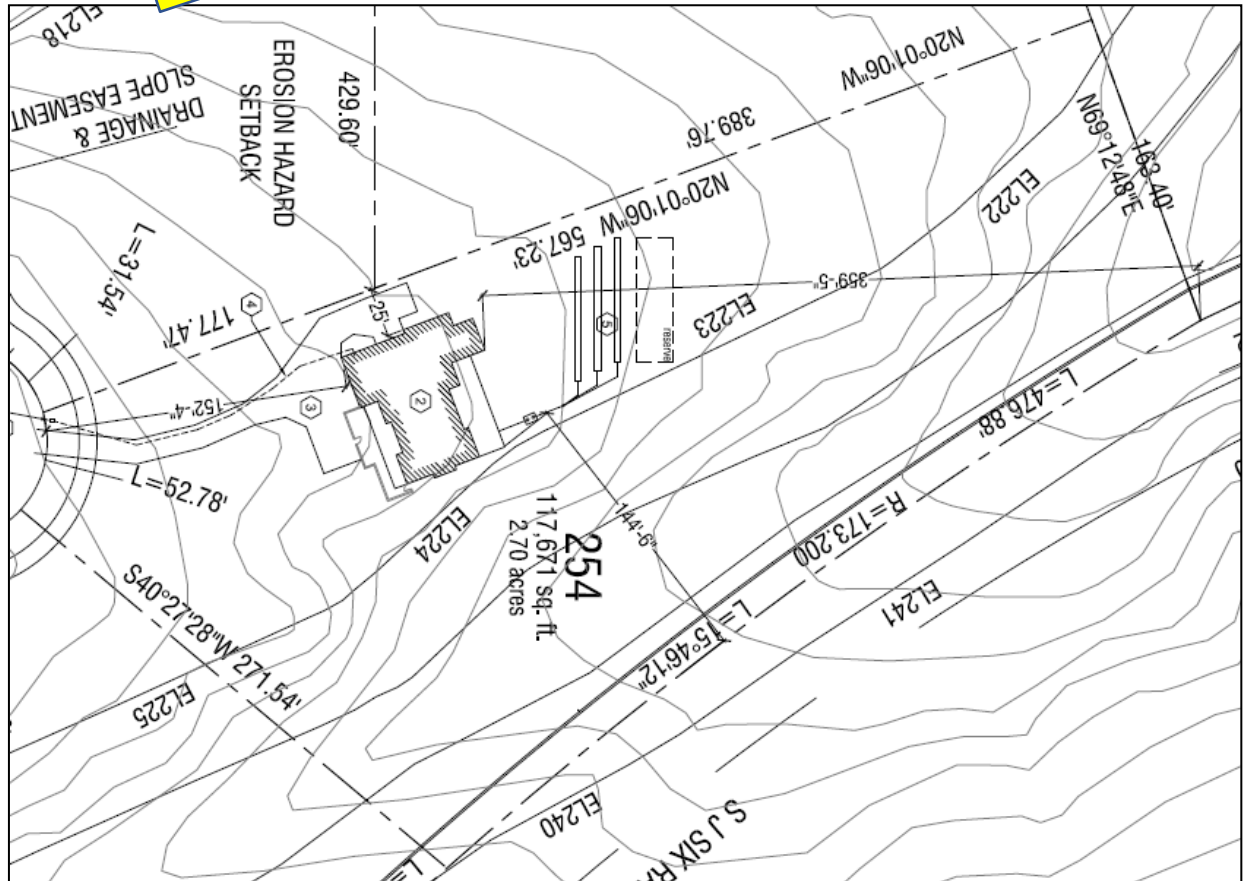
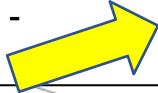
For peace of mind, all Red Hawk homes are **Energy Star** rated. A home energy rating involves an analysis of a home's construction plans and specifications. Based on the home's plans, the Home Energy rater uses an energy efficiency software package to perform an energy analysis of the home's design.

This analysis yields a projected, pre-construction Energy Rating Index. Then, the energy rater conducts onsite inspections of the Red Hawk [NetZero](#) homes to assure the construction of the home meets the specifications defined in the construction plans. On site tests and inspections include a blower door test (to test the leakiness of the house) and an HVAC efficiency test. Results of these tests, along with inputs derived from the plan review, are used to generate the Energy Rating Index score for the home. The Sky Island on Lot 254 has achieved our very best Energy Star rating.



Located high on Lot 254, the Sky Island orientation provides panoramic views of the surrounding mountains. A herd of deer will greet you at sunrise each morning.

**NORTH -**



Visit the Red Hawk online design center and pursue the Sky Island options and upgrades.

